



Item # _____
Model # _____
Quantity _____
Project # _____

Specifications & Features

Model # PM6006-6/8

6 & 8 oz Popcorn Machine

A high-output, Stainless Steel kettle for powerful performance and to use and easy cleaning.

Double element and double thermostat

Sturdy cabinet construction that withstands heavy commercial use and maintains attractive appearance.

Tempered glass panels for easy cleaning.

Presentation lamp which creates an attractive display setting for increased impulse buying.



FEATURES:

The POPCORN MACHINE is designed to be used almost anywhere such as;

- *Family Room
- *Dorm Rooms
- *Office
- *Club House
- *Anywhere people gather to have fun-One year limited manufacturers warranty

Note: Dimensions and Specification are subject to change without notice.

Approvals

ETL

COZOC Group Inc.

14843 Proctor Ave., # C,
City of Industry, CA 91746

Phone: 626-330 6269

Fax: 626-956 0765

Email: info@cozoc.com

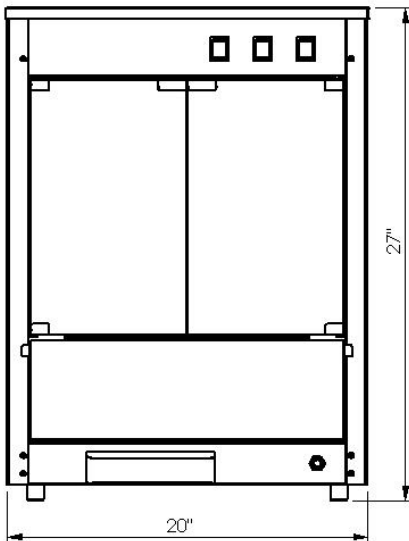
www.cozoc.com



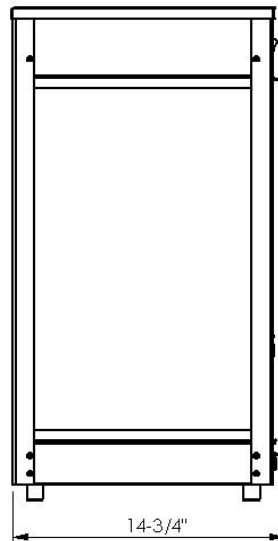
Dimensions and Specifications

Model # PM6006-6/8
6 & 8 oz Popcorn Machine

Item # _____
Model # _____
Quantity _____
Project # _____



Front View
Model: **PM6006-6/8**



Side View

Approvals: ETL
Electrical: 120 Volt, 60 HZ
(800 & 1200 Watts) (or) 220 Volt, 50 HZ

Options:

Dimensions: 20" W x 14 3/4" D x 27" H
Net Weight: 45 pounds
Gross (Shipping) Weight: 50 pounds
Package: 21" W x 16 1/2" D x 28" H

Note: Dimensions and specifications are subject to change without notice.

COZOC Group Inc.

14843 Proctor Ave., # C,
City of Industry, CA 91746

Phone: 626-330 6269
Fax: 626-956 0765
Email: info@cozoc.com
www.cozoc.com