

Specifications & Features

Model # HPC7100

Heater / Proofer Insulated Cabinet with Remote Control

This insulated cabinet provides the ability to proof a variety of baked goods and allows them to rise before baking. Easy set up with manual digital controls or by using the supplied remote control enables you to choose a variety of temperatures including warming. Designed with enduring quality that protects your long term investment.



FEATURES:

- Designed for proofing and heating
- All digital display. Set up manually or by remote control
- Adjustable thermostat allows a variety of warming temperatures
- Auto control inflow of water provides moisture for proofing. Water can be added manually as well.
- Provides cabinet holding temperature up to 185 F
- Humidity up to 95% (under 90F)
- Total pan capacity is 18 pans (18"X26")
- Clear polycarbonate door provides easy visibility
- Contains two safety-lock casters and two without for easy mobility
- Construction: Aluminum and steel cabinet
- Limited manufacturers warranty

Note: Dimensions and Specification are subject to change without notice.

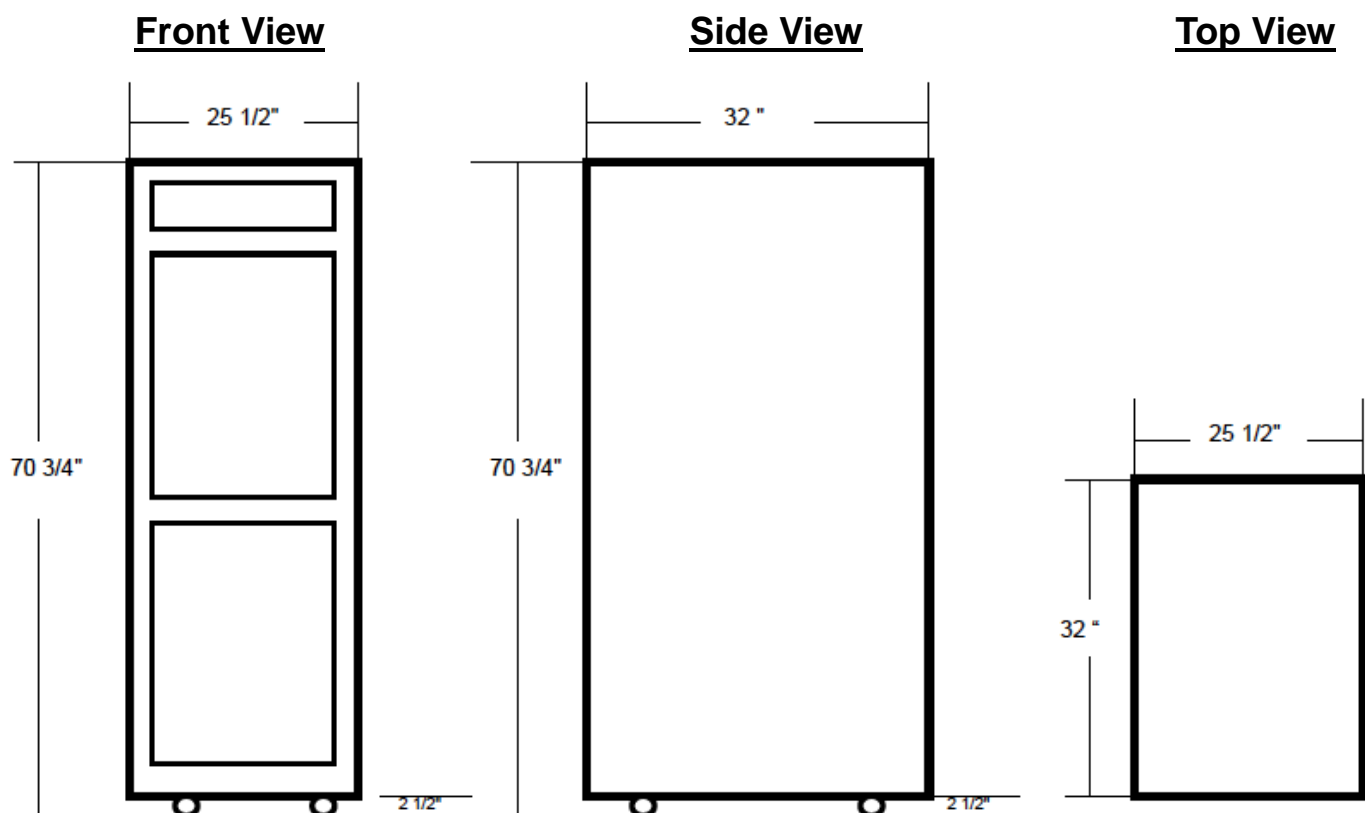




Dimensions & Specifications

Model # HPC7100

Heater / Proofer Cabinet with Remote



Electrical: 120 Volt, 60 HZ (1800 Watts) or
220 Volt, 50 HZ

Total Pan Capacity: 18 pieces (18" x 26")

Net Weight: 229 pounds

Gross Shipping Weight: 280 pounds

Dimensions: 25 1/2" W x 32" D x 70 3/4" H

Package: 26 3/4" W x 34 1/2" D x 78 3/4" H

Note: Dimensions and specifications are subject to change without notice.